



A Desirable Two Bedroom Detached/ Semi-Detached Bungalow

Available as both detached and semi-detached bungalows, the spacious entrance hallway of The Collingham comes with convenient storage and leads on to a stylish and spacious kitchen/dining area complete with integrated appliances. The kitchen/diner flows into good sized and flexible open plan lounge, which optionally can be configured as a separate living space.

Sliding doors extend your living space onto a patio area and a well-proportioned rear garden. Additionally the property benefits from a dedicated external car port.

Also from the entrance hall, you'll find a master bedroom with space for fitted wardrobes adjacent to the family bathroom with full-height tiling, heated towel rail, contemporary sanitary ware. A further spacious double bedroom, again with space for fitted wardrobes, is also located from the entrance hallway. Gas central heating throughout is controlled by a modern "Hive" compatible smart thermostat.

Key Points

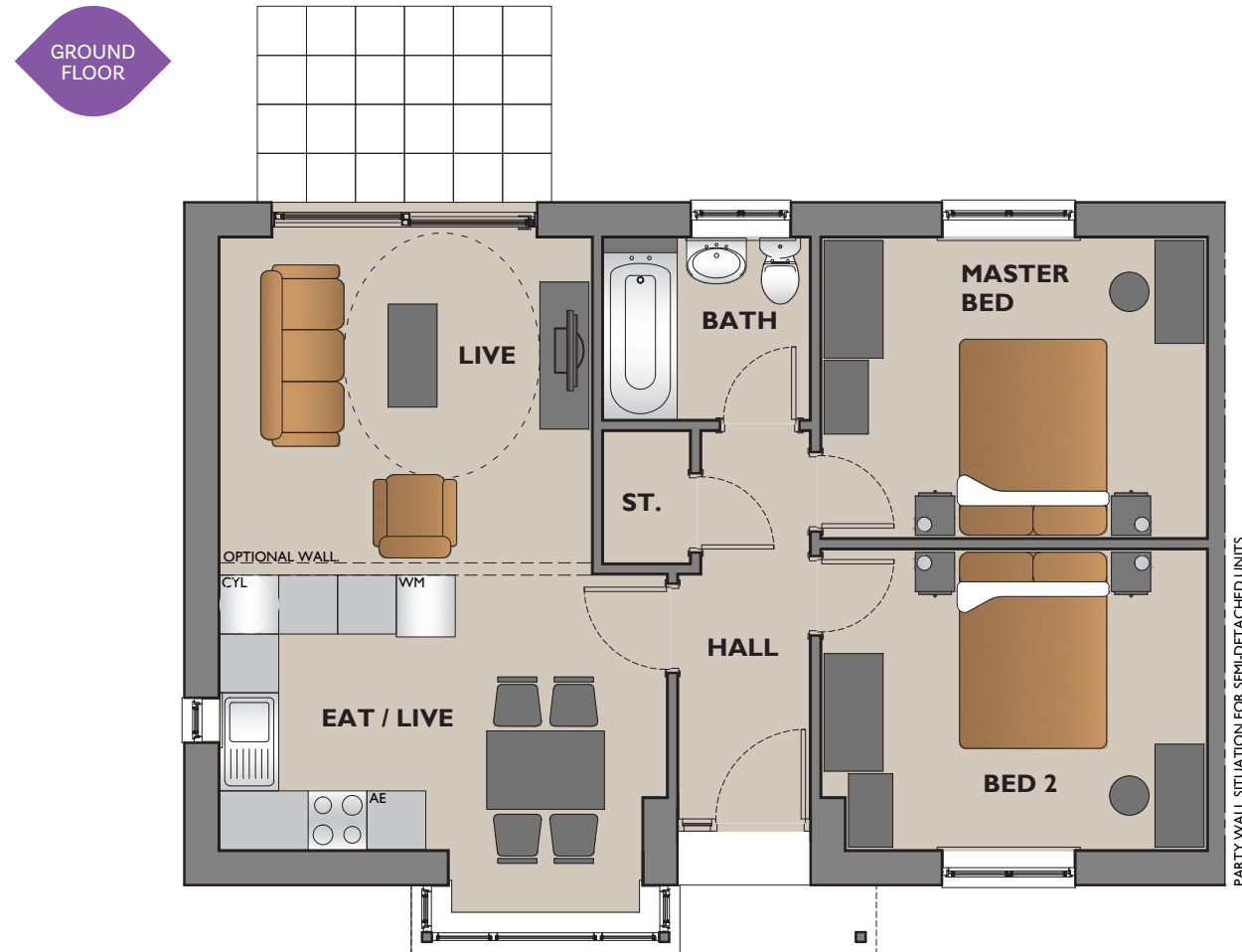
- Sliding doors to the rear garden space and patio area
- Choice of a wide range of stylish kitchens with integrated appliances
- Dedicated Car Port
- Generous sized master bedroom
- Fully tiled family bathroom
- Additional large double bedroom
- Gas central heating with Hive compatible smart thermostat
- Chrome electrical fittings throughout
- Fitted flooring throughout

The Collingham

2 Bedroom Bungalow

Type I Dimensions

All maximum unless stated otherwise. All taken to face of plaster as shown on drawings.



Ground Floor

Live – 3315mm x 3790mm (assuming 'wall' between Live and Live / Eat room).

Live/Eat – 2800mm x 4555mm (excluding bay window).

Master Bed – 3055mm x 3925mm.

Bed 2 – 3055mm x 3925mm.

Bath – 1850mm x 2100mm.

Store – 875mm x 1340mm.

Gross internal floor area – 63.5m².

The Collingham

GROUND FLOOR

All images, photographs and dimensions are for illustrative purposes only and are not intended to be relied upon for, nor to form part of, any contract unless specifically incorporated in writing into the contract. The dimensions given are illustrative for this house type, individual properties may differ and dimensions should not be used for carpet or flooring sizes, appliance spaces or items of furniture.