



Spacious Contemporary Designed Two Bedroom Apartments (GF, FF & SF)

Designed with the young professional in mind, The Oxton comprises of a secure shared entrance hallway and cycle store which leads onto a range of contemporary styled apartments set over three storeys.

The apartment comprises of a spacious, modern open plan style living/dining area and a stylish kitchen with integrated appliances. It includes a generous sized master bedroom with space for fitted wardrobes, a further good sized single bedroom and a family bathroom with full-height tiling, heated towel rail, contemporary sanitary ware. Additional cupboards are conveniently located for the storage of essential items.

Gas central heating throughout is controlled by a modern "Hive" compatible smart thermostat.

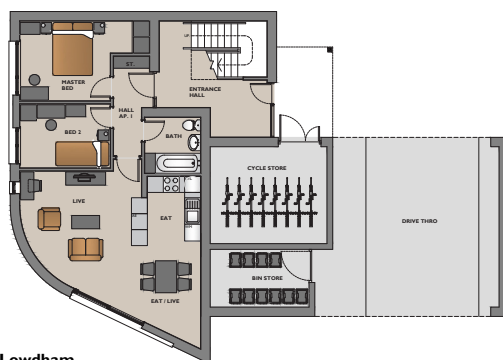
Key Points

- Choice of a wide range of stylish kitchens with integrated appliances
- Additional convenient internal storage space
- Master bedroom with space for fitted wardrobes
- Additional generous sized single bedroom/home office
- Gas central heating with Hive compatible smart thermostat
- Chrome electrical fittings throughout
- Fitted flooring throughout
- Dedicated Car Parking for each apartment
- Secure external door entry system with remote access

Type C Dimensions

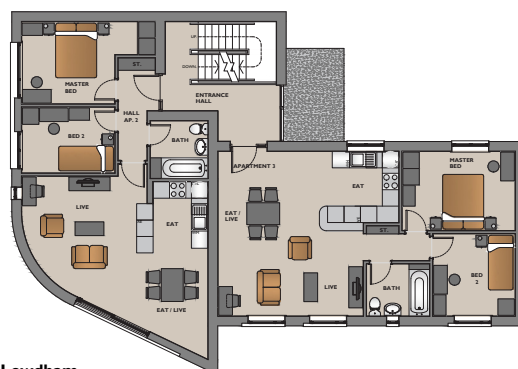
All maximum unless stated otherwise. All taken to face of plaster as shown on drawings.

GROUND FLOOR



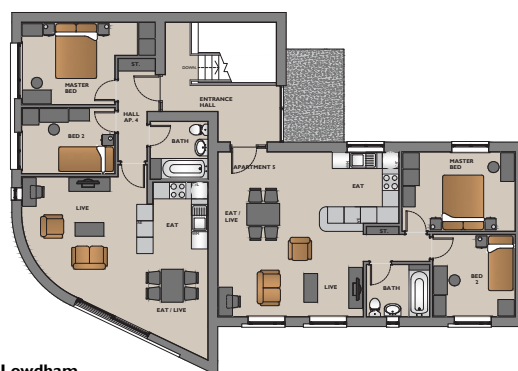
The Lowdham
GROUND FLOOR

FIRST FLOOR



The Lowdham
FIRST FLOOR

SECOND FLOOR



The Lowdham
SECOND FLOOR

FLAT C1

Live, Live/Eat & Eat – 6485mm x 6800mm.
Master Bed – 3000mm x 4875mm.
Bed 2 – 2400mm x 3400mm.
Bath – 2100mm x 2100mm.
Store – 450mm x 1350mm.

Flat C1: Gross internal floor area – 65.5m².

FLAT C2

Live, Live/Eat & Eat – 6485mm x 6800mm.
Master Bed – 3000mm x 4875mm.
Bed 2 – 2400mm x 3400mm.
Bath – 2100mm x 2100mm.
Store – 450mm x 1350mm.

Flat C2: Gross internal floor area – 65.5m².

FLAT C3

Live, Live/Eat & Eat – 6015mm x 6600mm.
Master Bed – 2890mm x 4125mm.
Bed 2 – 3000mm x 3000mm.
Bath – 1900mm x 2300mm.
Store – 290mm x 1175mm.

Flat C3: Gross internal floor area – 65.5m².

FLAT C4

Live, Live/Eat & Eat – 6485mm x 6800mm.
Master Bed – 3000mm x 4875mm.
Bed 2 – 2400mm x 3400mm.
Bath – 2100mm x 2100mm.
Store – 450mm x 1350mm.

Flat C4: Gross internal floor area – 65.5m².

FLAT C5

Live, Live/Eat & Eat – 6015mm x 6600mm.
Master Bed – 2890mm x 4125mm.
Bed 2 – 3000mm x 3000mm.
Bath – 1900mm x 2300mm.
Store – 290mm x 1175mm.

Flat C5: Gross internal floor area – 65.5m².

TITLE TO GO HERE

Bin Store – 2175mm x 3720mm.
Cycle store – 3650mm x 4400 mm.

Overall GF: Gross internal floor area – 83m²
 (exc. cycle and bin store).

Overall FF: Gross internal floor area – 152m².

Overall SF: Gross internal floor area – 152m².

All images, photographs and dimensions are for illustrative purposes only and are not intended to be relied upon for, nor to form part of, any contract unless specifically incorporated in writing into the contract. The dimensions given are illustrative for this house type, individual properties may differ and dimensions should not be used for carpet or flooring sizes, appliance spaces or items of furniture.